

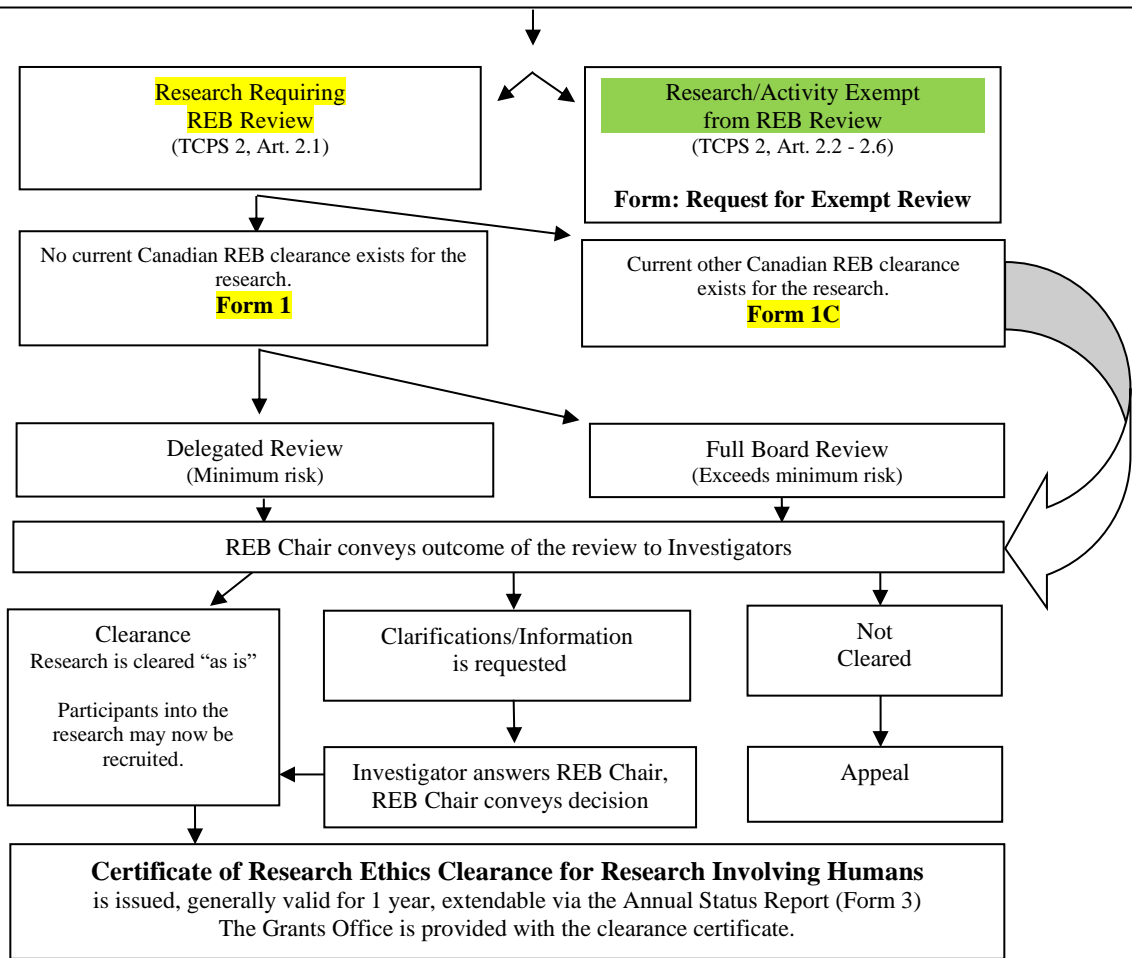
DOING RESEARCH WITH HUMAN PARTICIPANTS?

A Quick Flow Guide

INITIAL RESEARCH ETHICS REVIEW

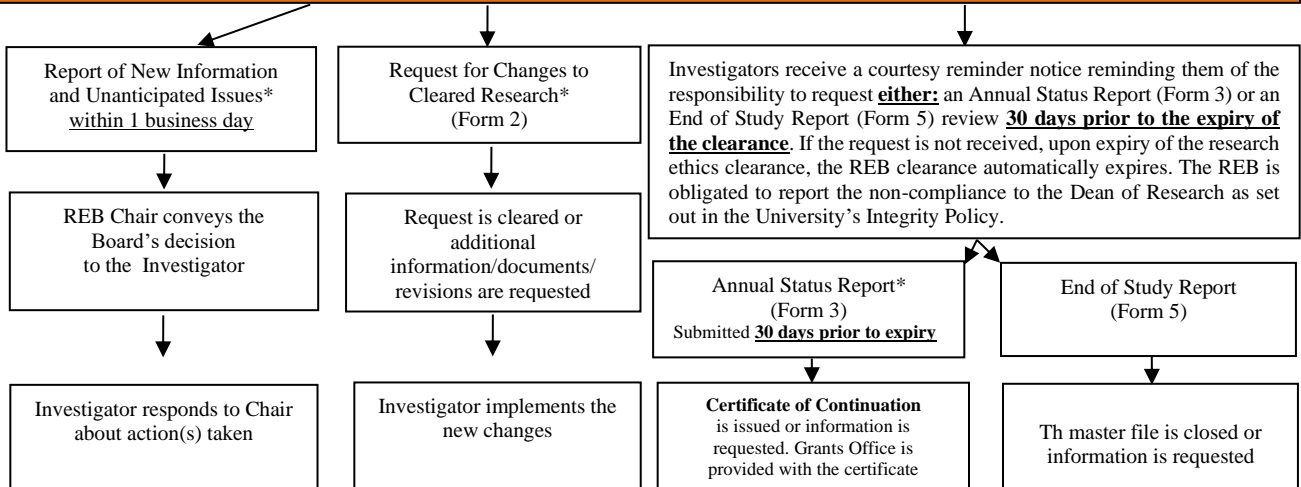
Contact: ethics@smu.ca

Tip!: The preparation tool for drafting work is the “SMU REB SOP- Completing Requests for Research Ethics Review Involving Humans”. Policy reference is the TCPS 2 and the TCPS 2 Glossary (Page 263). Applicant FAQs are listed on the REB website. Applicant feed back that familiarizing with the questions asked on REB review forms early helps with constructing a plan. Remember, plans in research change. Utilize your home REB to interpret the intention of the Policy.



CONTINUING RESEARCH ETHICS REVIEW

Contact: ethics.continuingreview@smu.ca



*when applicable